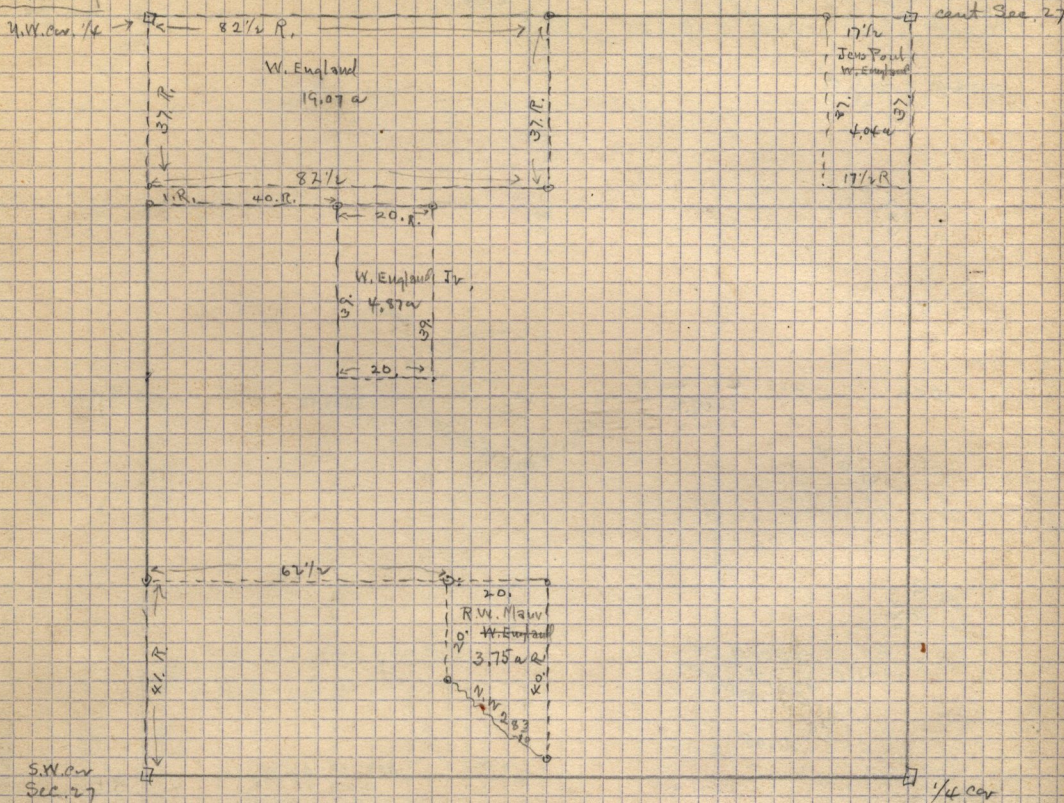


Aug. 28th 1904.

S. W. 1/4 of Sec. 27 - Tp. 7 N - R. 2 W.

Sketch plat showing location of original deeds of Englands land

See field book
H.P. 52. for descrip.



32-510-

J. H. Shaver to Chas. England and Wm England jr.

Pt. N.W. 1/4 Sec. 27, T. 7 N - R. 2 W - Beg. at point on W. line of said 1/4 sec. 27 24.7 ft. S 0° 16' W. from N.W. cor. sd 1/4 sec - S 9° 16' W. 410.8 ft. along W. line sd 1/4 - to S.W. cor. thence S 88° 43' E 1302.5 ft. to E. line of W. 1/2 of sd 1/4. N 41° 0' W. 488.4 ft. W. 1300.4 ft. parallel to N. line of sd 1/4, to beg. 12.26 a. also pt. of W. 2 rods wide leading to S. end of sd land from the S. along W. side of the E. line of W. 1/2 of sd 1/4 sec. Reserving a rd. of W. 2 rods wide across the N. end of sd land. Separate ownerships of the above to be divided as follows: The E 1/2 to Chas. England, and the W 1/2 to Wm England jr.

Copy from Co. Records

Traverse table of all that parts of Wm England jr. land S. of Co. Road.
Beg. at about 610.5 ft. S 0° 16' W. from N.W. cor. of S.W. 1/4 Sec. 27, T. 7 N - R. 2 W.

course	N	S	E	W
N 83° 24' E	475.9	54.7	472.8	
N 51° 36' E	384.6	238.9	361.4	
S 39° 41' W		310.4		20.0
N 88° 43' W		16.9		754.2
	310.5	310.4	774.2	774.2

} = 1.58 a which includes his Residence